

**Snap-In Compact RFI Filter IEC Connector Package**

# EAS, EBS Series



**UL Recognized**  
**CSA Certified**  
**VDE Approved**



EAS1/EBS1

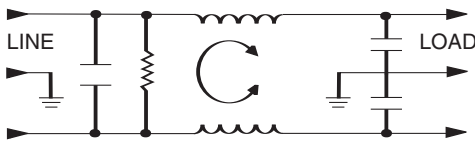
## EAS Series

This filter offers the performance characteristics of the EEA susceptibility filter with the additional advantage of a snap-in panel mount. The EAS series supersedes the EF series by providing superior performance, particularly in the common mode at low frequencies.

## EBS Series

This filter offers the performance characteristics of the EEB susceptibility filter with the additional advantage of a snap-in panel mount. The EBS provides enhanced differential mode performance compared to both the EAS and EF series.

## Electrical Schematic



Resistor location for reference only.

## Specifications

- Maximum leakage current, each line-to-ground**
  - @ 120 VAC 60 Hz: .22 mA
  - @ 250 VAC 50 Hz: .38 mA
- Hipot rating (one minute):**
  - line-to-ground: 1500 VAC
  - line-to-line: 1450 VDC
- Operating frequency:** 50/60 Hz
- Rated voltage (max.):** 250 VAC
- Minimum insertion loss in dB:**
  - Line-to-ground in 50 ohm circuit

Current Rating	Frequency-MHz								
	.01	.05	.1	.15	.5	1	5	10	30

EAS Models									
1A	12	23	29	32	41	47	47	47	40
3A	-	10	15	19	30	36	48	50	47
6A	-	1	4	10	22	28	42	48	47
10A	-	1	3	5	14	20	32	38	47
15A	-	-	-	1	5	8	20	25	40

EBS Models									
1A	12	23	29	32	41	47	47	47	40
3A	-	10	14	18	30	36	48	50	47
6A	-	1	4	10	22	28	42	48	47
10A	-	1	3	5	14	20	32	38	47
15A	-	-	-	1	5	8	20	26	40

Line-to-line in 50 ohm circuit

Current Rating	Frequency-MHz						
	.5	1	1.5	3	5	10	30

EAS Models							
1A	1	9	19	32	42	45	40
3A	2	4	6	20	35	45	40
6A	2	4	6	6	24	40	40
10A	1	4	5	5	5	30	40
15A	1	4	4	12	14	15	40

Current Rating	Frequency-MHz						
	.01	.15	.5	1	3	5	10

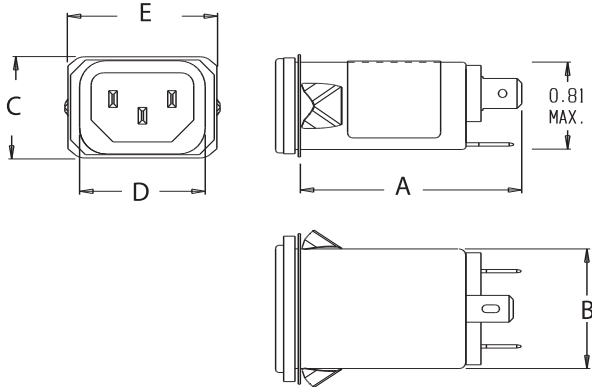
EBS Models								
1A	1	3	14	23	41	47	50	44
3A	1	2	11	14	25	38	44	40
6A	1	2	10	14	20	33	42	40
10A	1	2	10	16	19	19	39	40
15A	-	2	10	16	24	28	28	40

**Snap-In Compact RFI Filter IEC Connector Package (Continued)**

# EAS, EBS Series

## Case Style

### EAS1/EBS1



Typical dimensions:  
 Terminals: .250 [6.35] (3)  
 Slot: .07 x .16 [1.8 x 4.1]

Holes: .07 [1.8] Dia.(2)

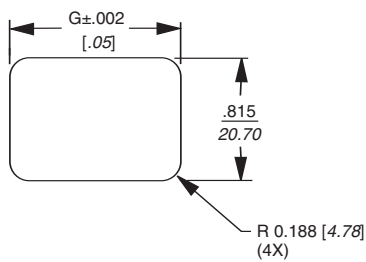
## Case Dimensions

Part No.	A (max)	B (max)	C (max)	D $\pm .010$ $\pm .25$	E (max)
EAS1, EBS1	<b>2.20</b> <i>55.88</i>	<b>1.15</b> <i>29.2</i>	<b>.96</b> <i>24.38</i>	<b>1.185</b> <i>30.10</i>	<b>1.41</b> <i>35.81</i>

## Part Numbers

1EAS1	1EBS1
3EAS1	3EBS1
6EAS1	6EBS1
10EAS1	10EBS1
15EAS1	15EBS1
Line Cord No.	GA400
Insulating Boot No.	FA601

## Recommended Panel Cutout



**Front Mount Only**

Panel Thickness	G Dim. ±.002
0.031 - 0.052 [ .79 - 1.32 ]	1.260 [32.00]
0.046 - 0.068 [ 1.17 - 1.73 ]	1.350 [34.29]